

How do I install PlanManager?

How do I install PlanManager?

Introduction

This document describes a standard installation and configuration for PlanManager. For advanced configuration, you can consult the [Advanced](#) Configuration.

Requirements / Prerequisites

Windows environment: 2000, XP, Vista, Windows 7, Windows 8, Windows 10

PDF Reader: For example [Foxit](#) or [Adobe Acrobat Reader](#)

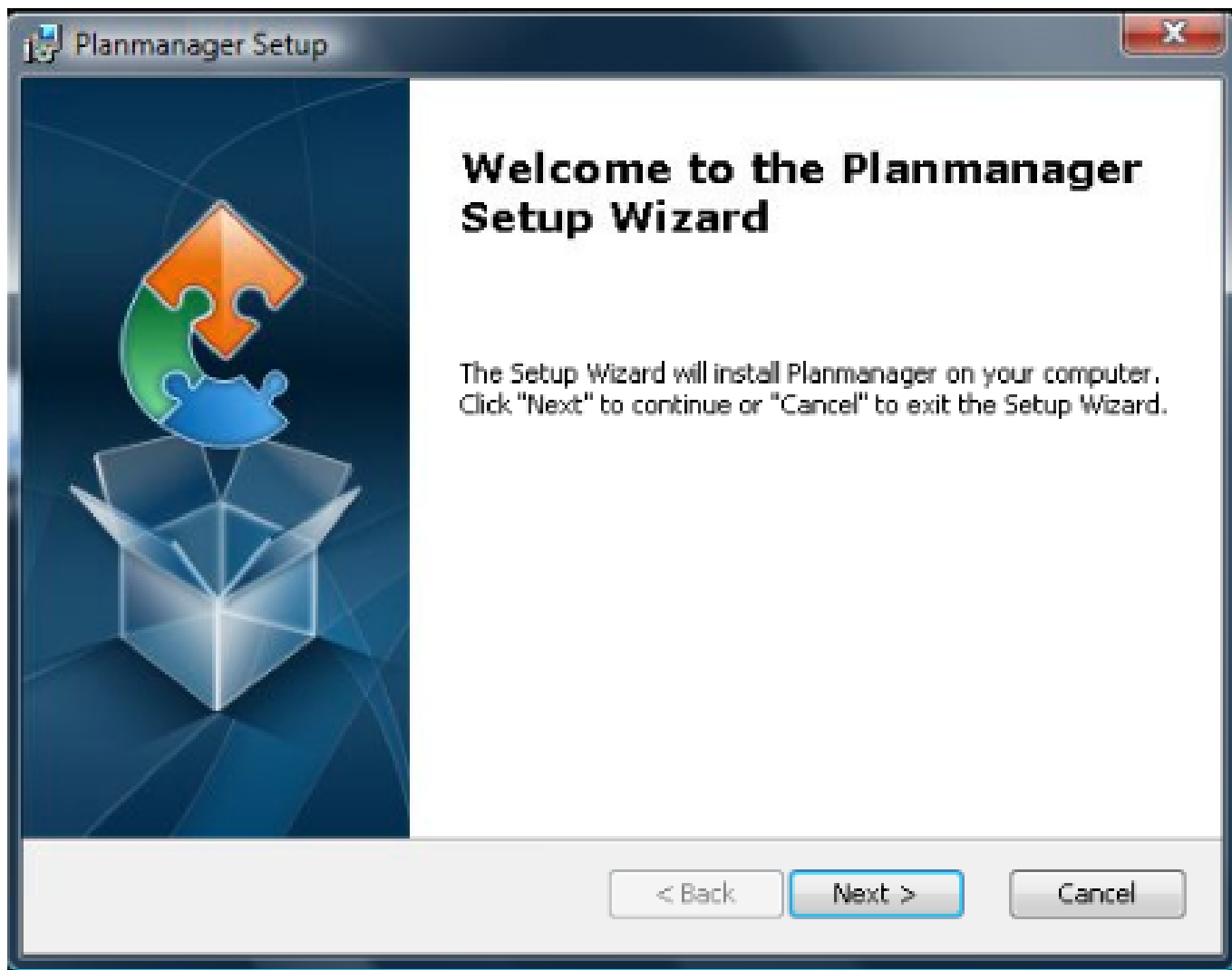
Downloading

You can download the latest PlanManager version planning via <http://insypro.com/setup.msi> when Windows asks you to run or to save the file, you choose run.

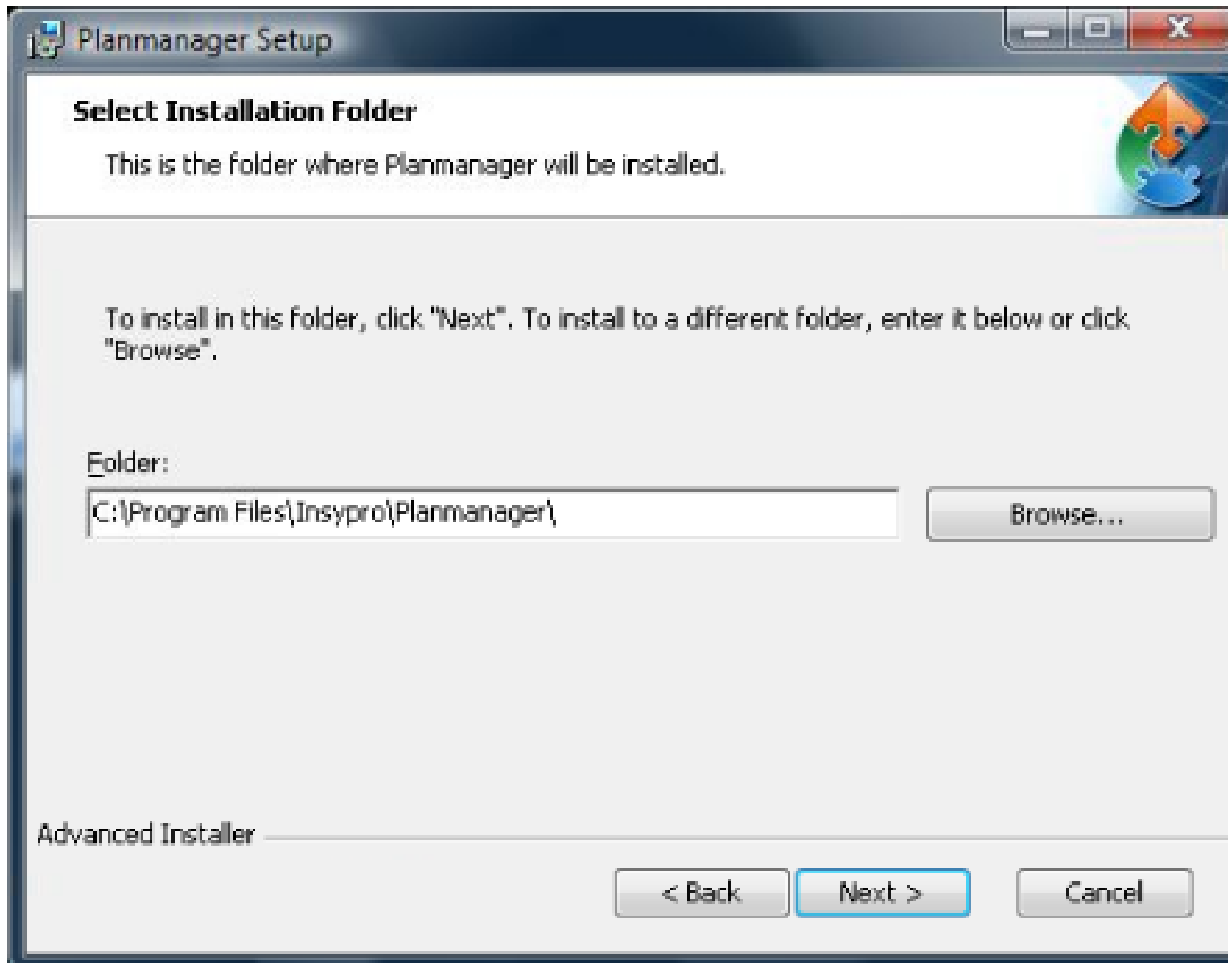
Installing

Make sure you have administrator rights on the PC.

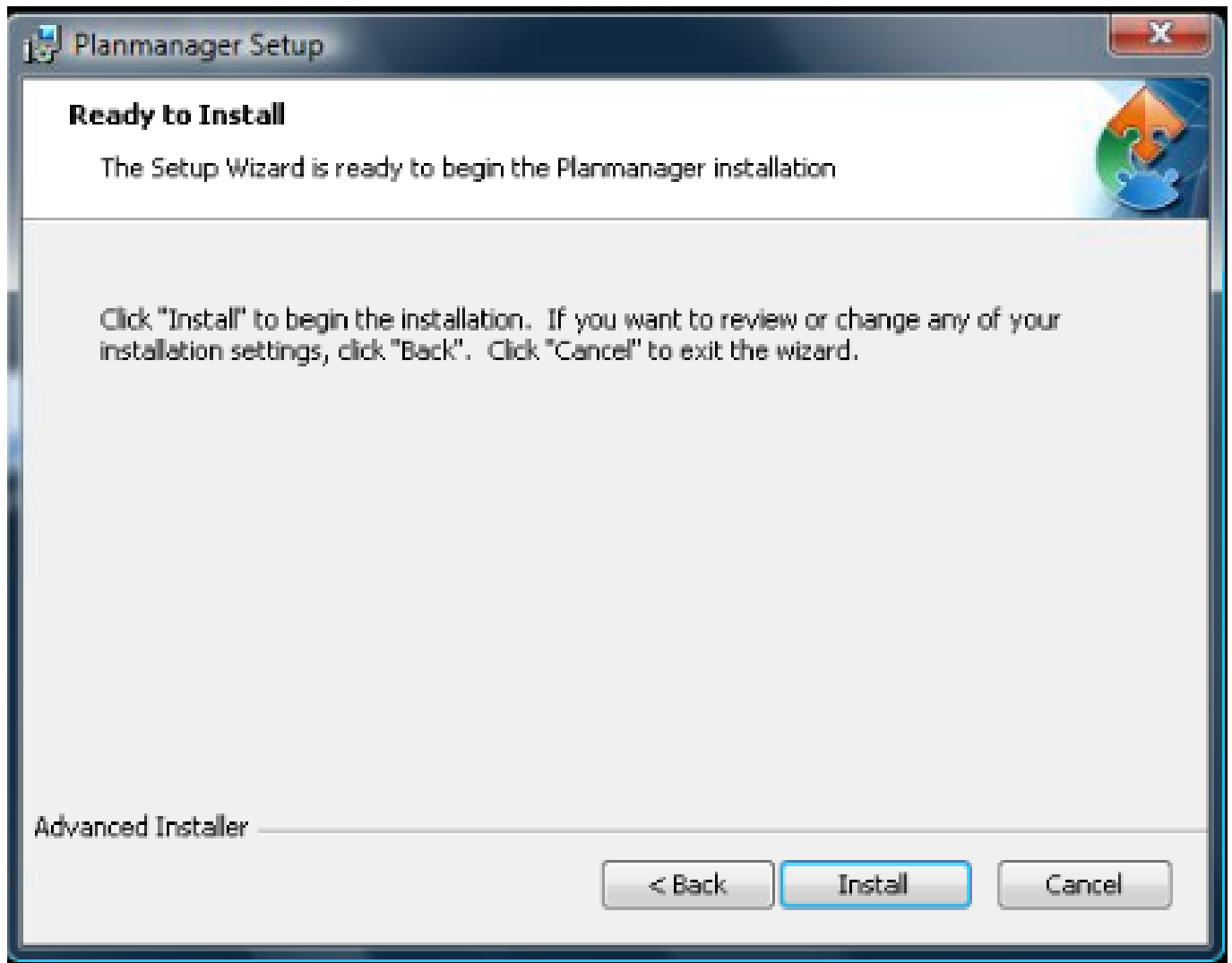
Open the downloaded file setup.msi. Click Run.



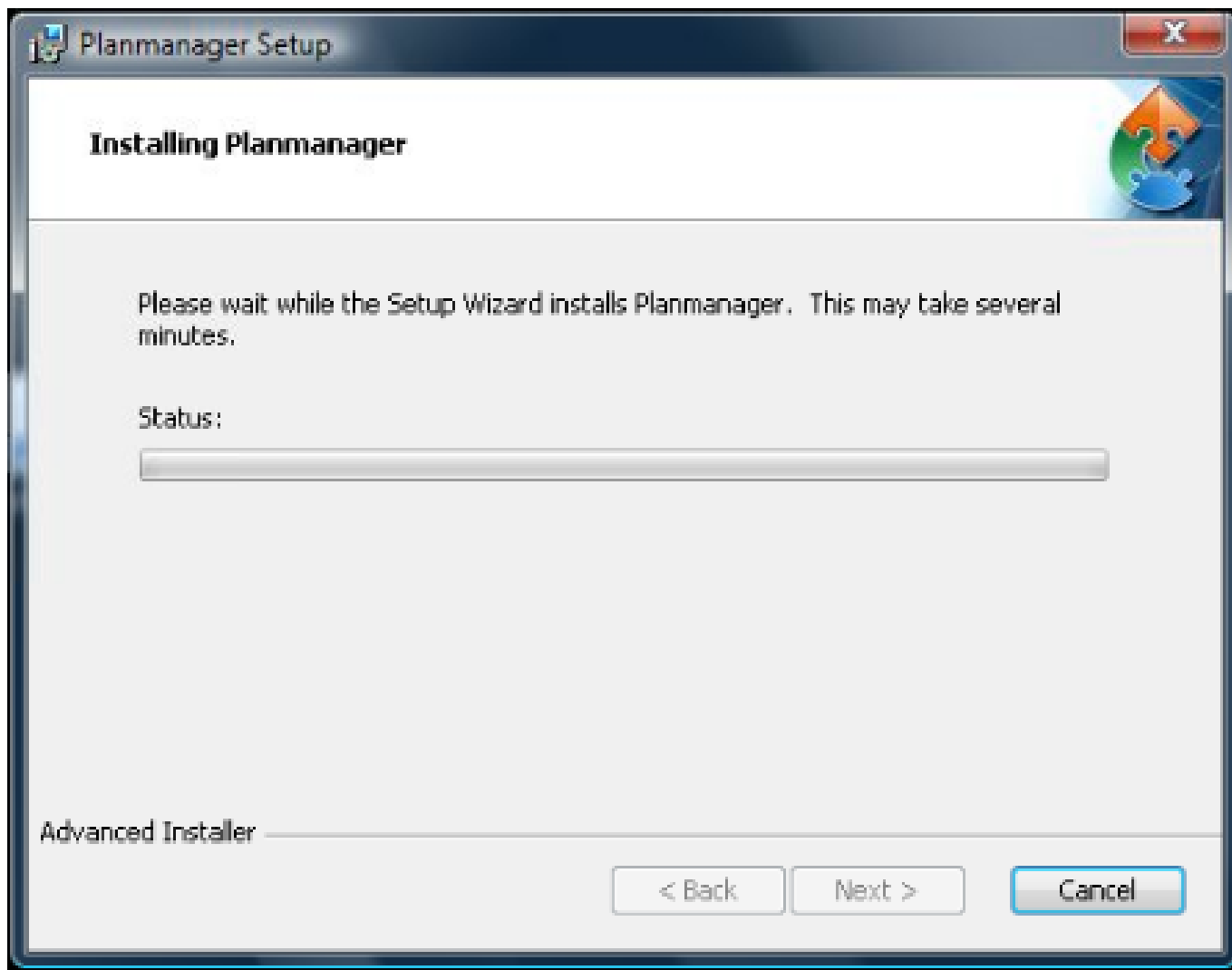
Click Next



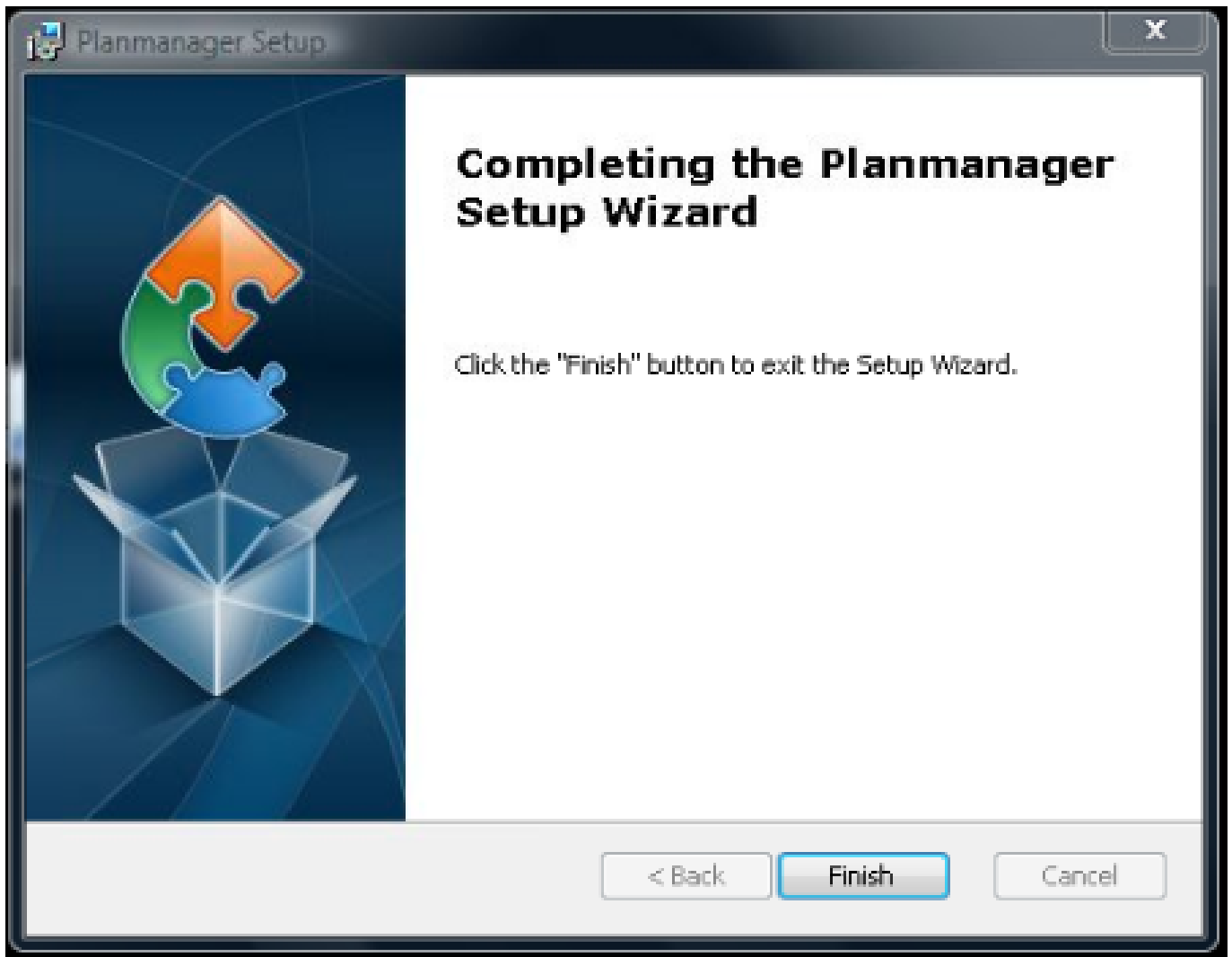
Click Next



Click Install

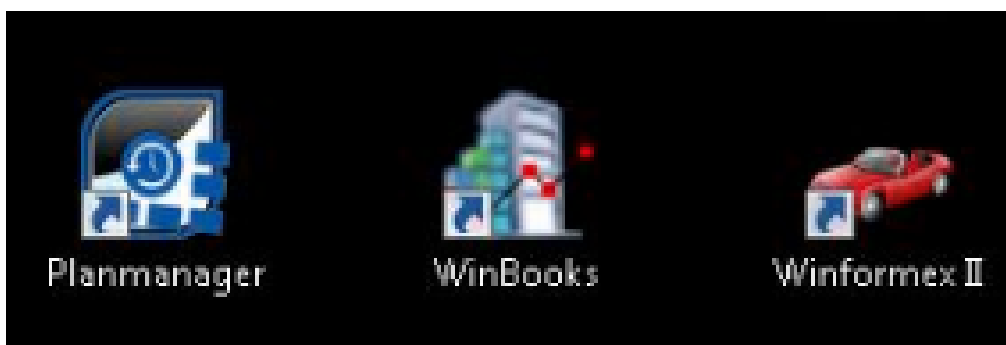


Wait ...



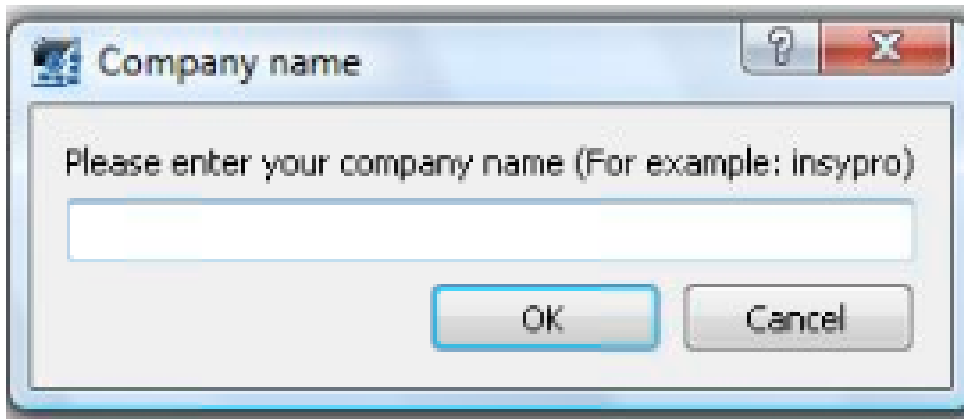
Click Finish

You now see the PlanManager icon on your desktop. Double click to open the program for the first time. The program will begin with the first configuration.



Configuration

The system will ask for your business name (company name) at first boot.



The company name will be used by PlanManager to configure your system. This will be communicated in the first training session.

The company name must be entered without spaces and lowercase.

Some example:

The Spanish demo environment has the PlanManager company name "demoes".

Advanced Configuration

If you have a Terminal Server or want to change the PlanManager settings to your liking, please quote the document [Advanced Configuration](#) for more information.

Unikátní ID: #2025

Autor: Jean-Marie

Aktualizováno: 2019-10-08 10:30