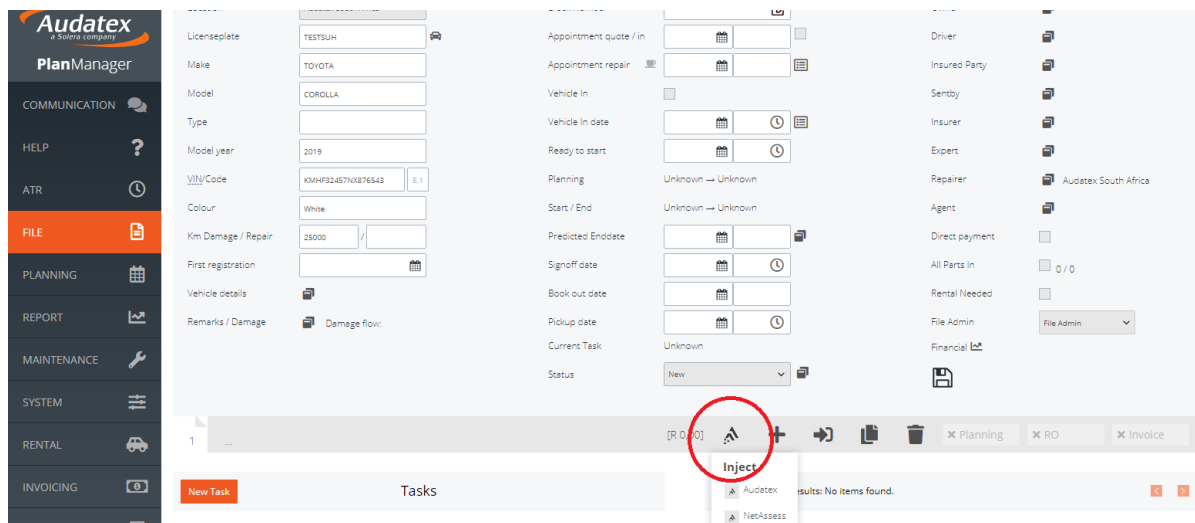


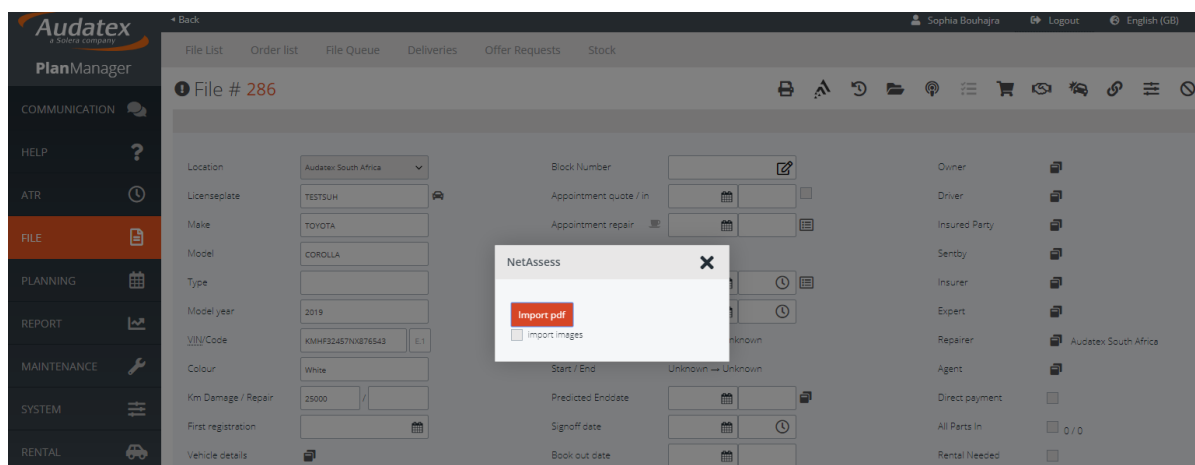
# Jobs

## Import Netassess (only for South Africa)

It's now possible to import data from Netasses. When you go to the job there's a button to make an import. It's the same button that's used to send data to audatex.



When you click on 'import Netasses' you'll get the option to browse on your computer and selected a netassess pdf file. It's also possible to import the images.



Unique solution ID: #4068  
Author: Sophia Bouhajra  
Last update: 2022-02-10 11:22