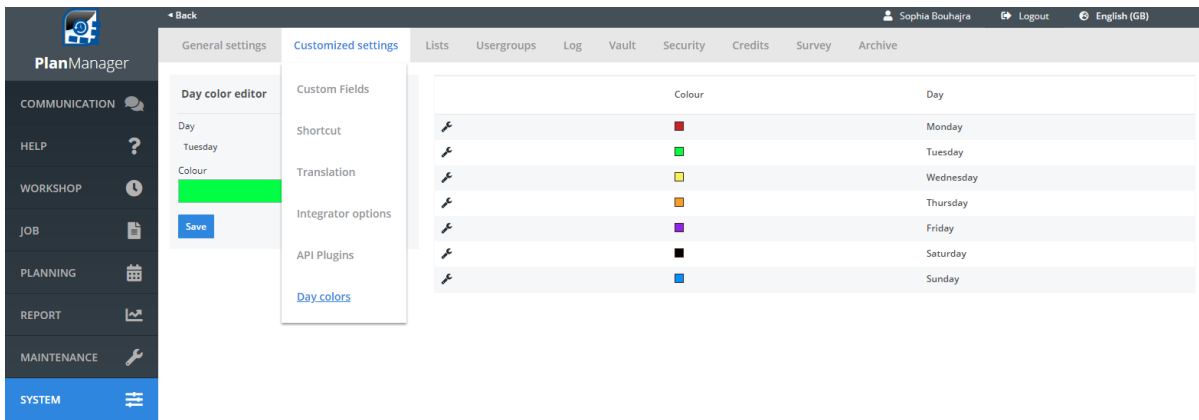


Versions

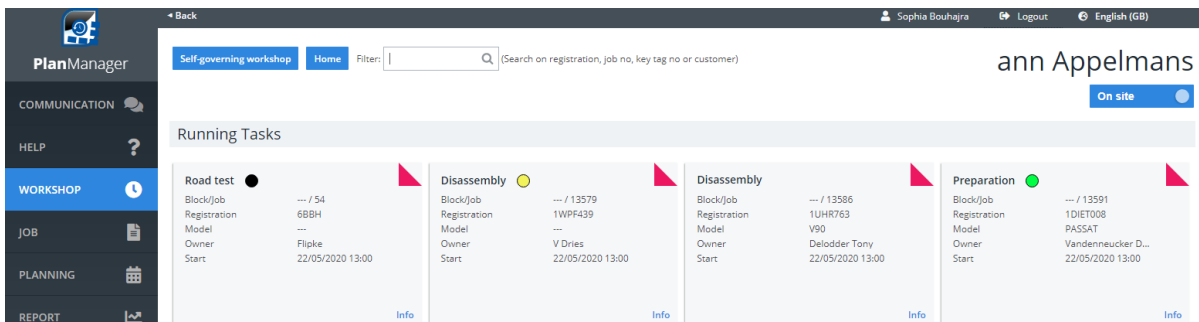
2020-06 June

Colorize block number

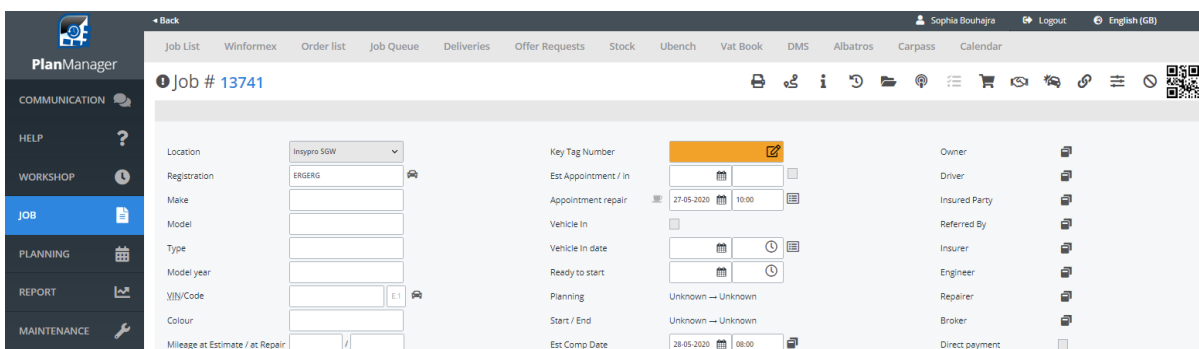
From this release it is possible to give the block numbers a color. To set this you can go to System – Customized settings- Day colors.



Here it is possible to give a specific color to every day. This is similar to the functionality to assign a color to a task type. The color indication of the block number will also be displayed on the ATR. Below you can find an example of the display on the ATR.



The day colors are also visible in the job itself. The color is based on the end date entered in the job.



Logistics pop-up

Versions

A visual adjustment was made to the pop-up logistics. Previously, the user had to scroll to consult all the data. The pop-up has been enlarged so that all data is now visible in the pop-up without scrolling. This is only a visual adjustment. The functionality has remained the same.

The screenshot shows the 'Logistics' pop-up form in the PlanManager application. The form is divided into two main sections: 'Arrival' and 'Departure'. The 'Arrival' section includes fields for Appointment type, Personnel, Rental type, Book in date, Pickup details, Address, Postcode/Town, County/Province, Country (set to Belgium), Contact, Contact phone, and Comments. The 'Departure' section includes fields for Appointment type, Personnel, Book out date, Delivery details, Address, Postcode/Town, County/Province, Country (set to Belgium), Contact, Contact phone, and Comments. There are also checkboxes for 'Departed to customer', 'Vehicle received', 'Car delivered', and 'Arrival at repairer'. A 'Plan' button is located at the bottom right of the 'Arrival' section, and a 'Save' button is at the bottom right of the 'Departure' section. A 'Copy from arrival' button is also present in the 'Departure' section.

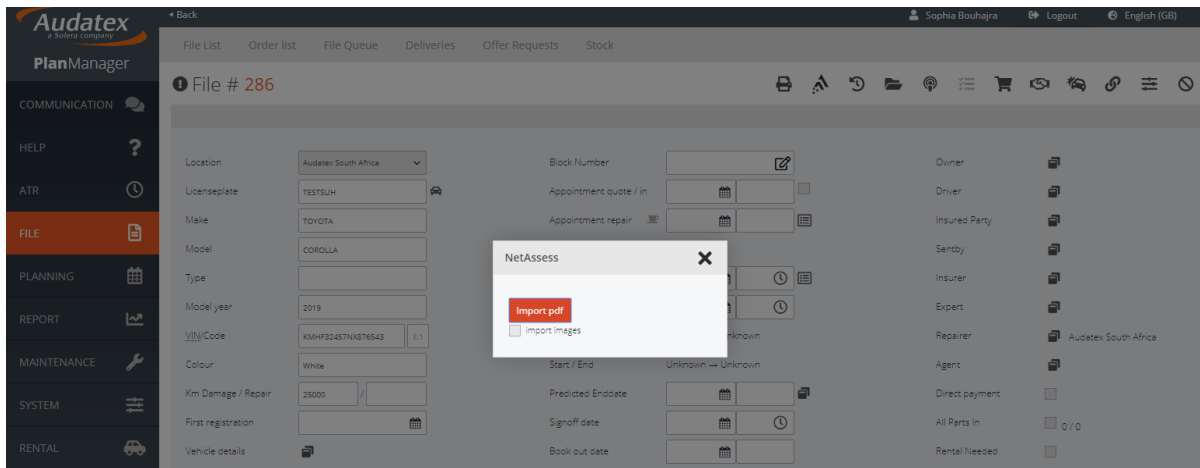
Import Netassess (only for South Africa)

It's now possible to import data from Netassess. When you go to the job there's a button to make an import. It's the same button that's used to send data to audatex.

The screenshot shows the Audatex PlanManager interface. The left sidebar contains navigation options: COMMUNICATION, HELP, WORKSHOP, JOB, PLANNING, REPORT, MAINTENANCE, SYSTEM, RENTAL, and INVOICING. The main area displays a form for a vehicle with details like Licenseplate (TESTSUH), Make (TOYOTA), Model (COROLLA), Type, Model year (2019), VIN/Code (KMHF32457N3876543), Colour (White), and Kim Damage / Repair (25000). The 'Import Netassess' button is highlighted with a red circle in the bottom right corner of the form. The bottom of the screen shows a 'Tasks' section with a 'New Task' button and a list of tasks.

When you click on 'import Netassess' you'll get the option to browse on your computer and selected a netassess pdf file. It's also possible to import the images.

Versions



Unique solution ID: #2481
Author: Glenn De Landtsheer
Last update: 2020-06-25 10:56