

Versions

2021-08 August

Data center Switzerland

Behind this we continue to work on improving the performance of PlanManager. Preparations are also being made for switching to our new infrastructure in Switzerland.

Extra logs

Additional logs were added that provide an overview of when a particular device has updated the application. You can find the logs by going to System - Logs in PlanManager.

Changed on ▼	Job	Invoice	Rental	Owner	Type	Changed by	Value	Reason
08-07-21 12:56:00					Mobile application updated		2067 : 2106301140 -> 2107021504	

Send quotes to multiple email addresses

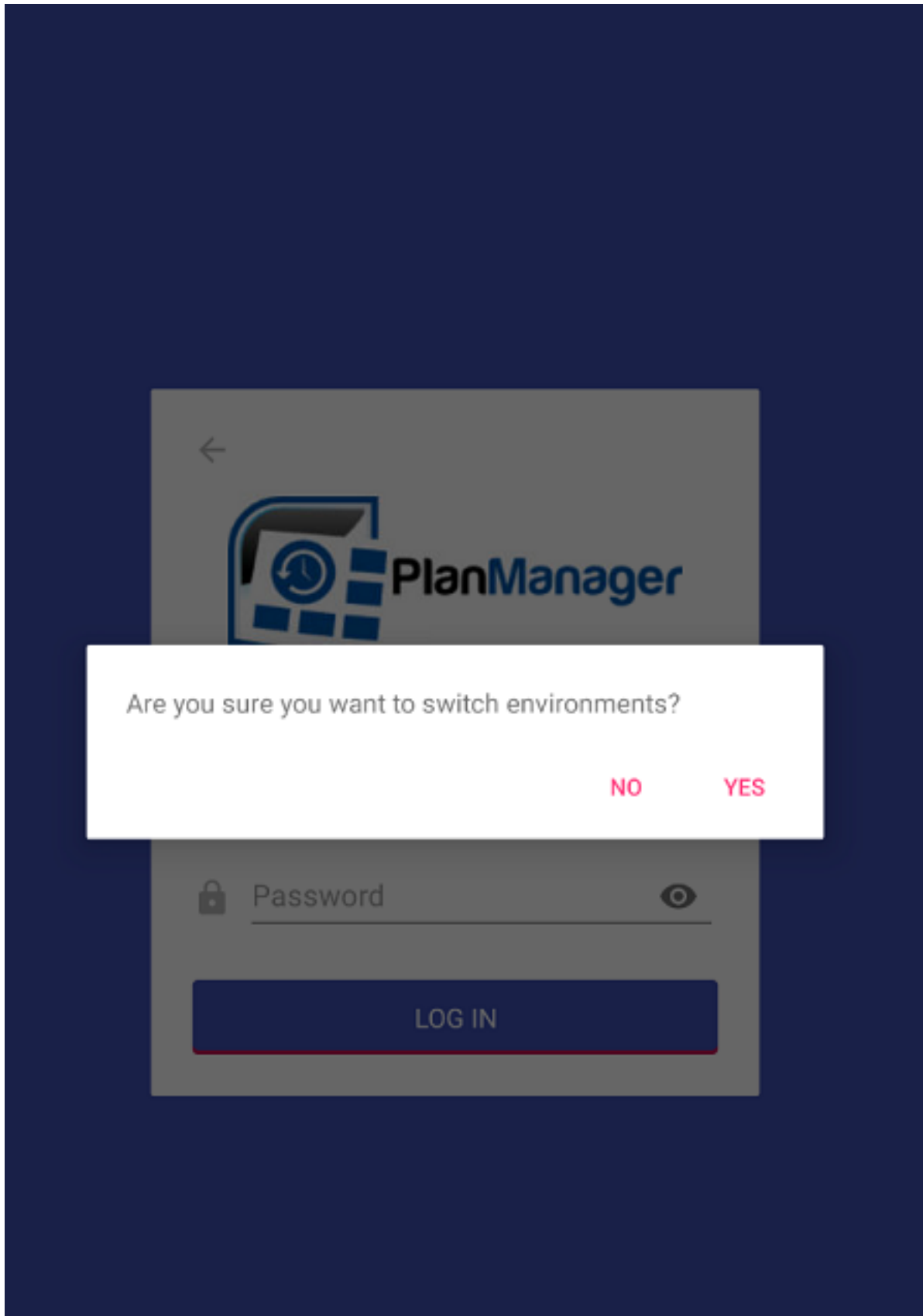
An adjustment was made so that from now on it is possible to send quotations to multiple email addresses. You can separate the email addresses by means of a comma.

Switch environment button + ability to remove users in the workshop application

Versions

An adjustment was made so that the 'environment change' button is no longer visible by default on the application login screen. As soon as the new release of the application is available, you can only switch environments by holding down the PlanManager logo.

Versions



This was adjusted because the 'change of environment' button was often

Versions

accidentally pressed when logging in/ changing staff members IN the workshop application. Furthermore, an adjustment was also made so that when registering different staff members, an admin user must be entered first. The admin user is the only user on the tablet who has permissions to remove other users. You can freely choose the admin user per device.

Eindeutige ID: #3535

Verfasser: Sophia Bouhajra

Letzte Änderung: 2021-07-30 09:18