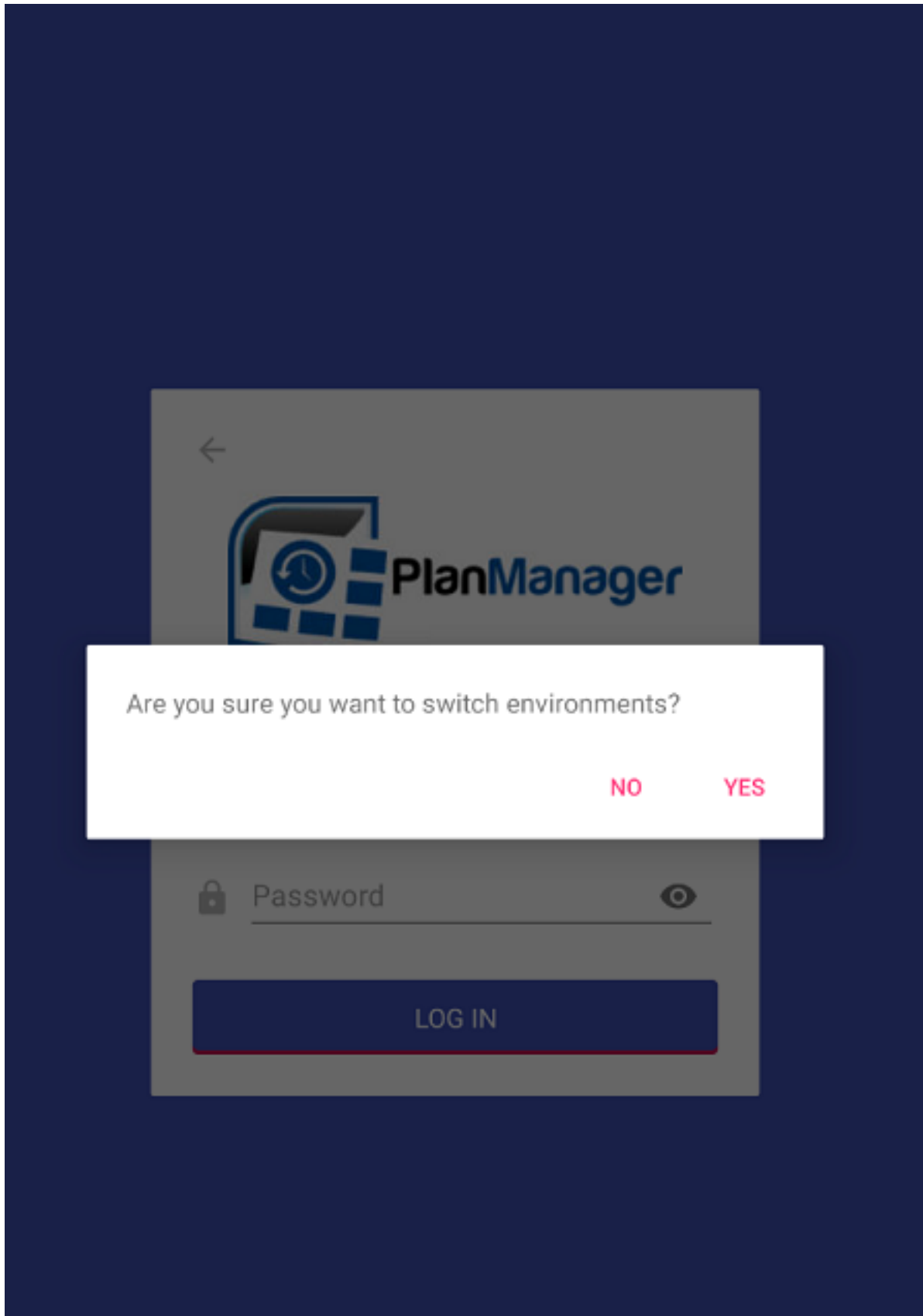


Workshop app

Switch environment button + ability to remove users in the workshop application

An adjustment was made so that the 'environment change' button is no longer visible by default on the application login screen. As soon as the new release of the application is available, you can only switch environments by holding down the PlanManager logo.

Workshop app



This was adjusted because the 'change of environment' button was often

Workshop app

accidentally pressed when logging in/ changing staff members IN the workshop application. Furthermore, an adjustment was also made so that when registering different staff members, an admin user must be entered first. The admin user is the only user on the tablet who has permissions to remove other users. You can freely choose the admin user per device.

Eindeutige ID: #3726

Verfasser: Sophia Bouhajra

Letzte Änderung: 2022-02-10 13:57